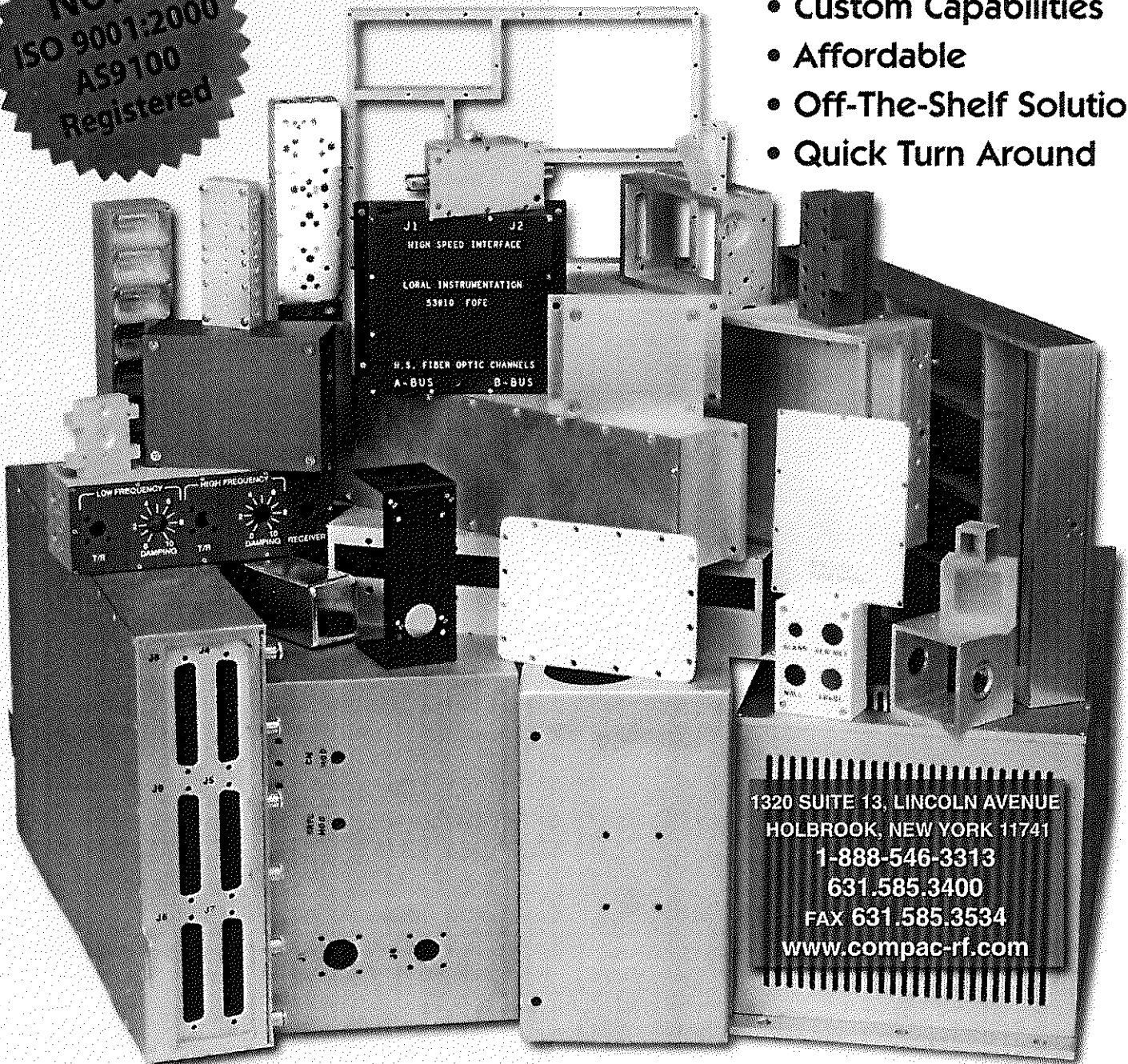


COMPAC

RF SHIELDING SPECIALISTS

NOW!!
ISO 9001:2000
A59100
Registered

- Custom Capabilities
- Affordable
- Off-The-Shelf Solutions
- Quick Turn Around



1320 SUITE 13, LINCOLN AVENUE
HOLBROOK, NEW YORK 11741
1-888-546-3313
631.585.3400
FAX 631.585.3534
www.compac-rf.com



VISIT OUR WEBSITE AT:

www.compac-rf.com

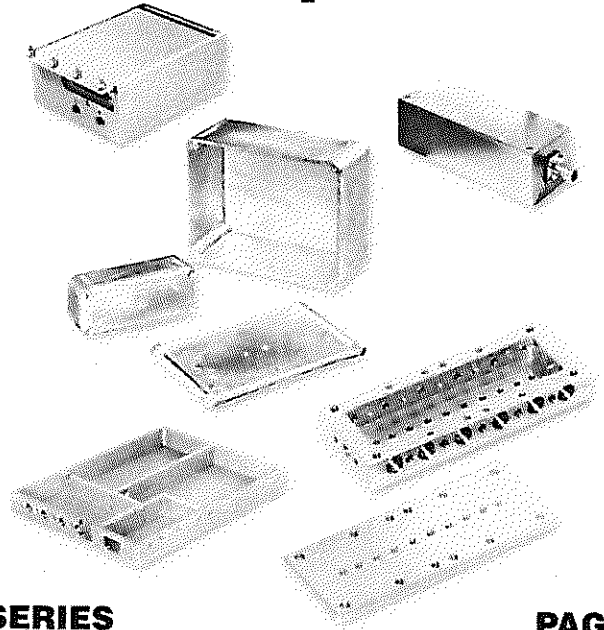
Compac Development Corporation is the only manufacturer that specializes in meeting your RFI/EMI shielded enclosure requirements from standard parts to total custom capabilities.

Compac offers an extremely versatile line of off-the-shelf shielded enclosures plus the additional capability of customizing our standard products or, manufacturing to your specs, from prototype to production.

To further support the design function Compac offers a broad selection of RF accessories, gaskets, coaxial attenuators, coaxial terminators, filter feed-thrus, connectors, mounting bars, etc.

The Compac concept is geared to fast, accurate, dependable manufacturing, to meet the most demanding delivery schedules.

For additional information or assistance, contact your local Compac representative, contact the factory directly or visit our website at: **www.compac-rf.com**.



SERIES	PAGE
SRF	3
RFT	4
BLANK	5
STANDARD	6
FLT	6
DIECAST BOXES	9
FINISHES	9
RF CONNECTORS	9
CUSTOM	10/11
COAXIAL ATTENUATORS	12
COAXIAL TERMINATIONS	12
FEED-THRU TERMINATIONS	12
FILTERS & FEED-THRUS	13
GASKETS	13
MOUNTING BARS	14
WARRANTY	15
SEE PAGES 7/8 FOR REQUEST FOR QUOTATION	



1320 SUITE 13, LINCOLN AVENUE
HOLBROOK, NEW YORK 11741
TOLL FREE 1-888-546-3313
TEL (631) 585-3400
FAX (631) 585-3534
www.compac-rf.com

VISIT OUR WEBSITE AT:

www.compac-rf.com



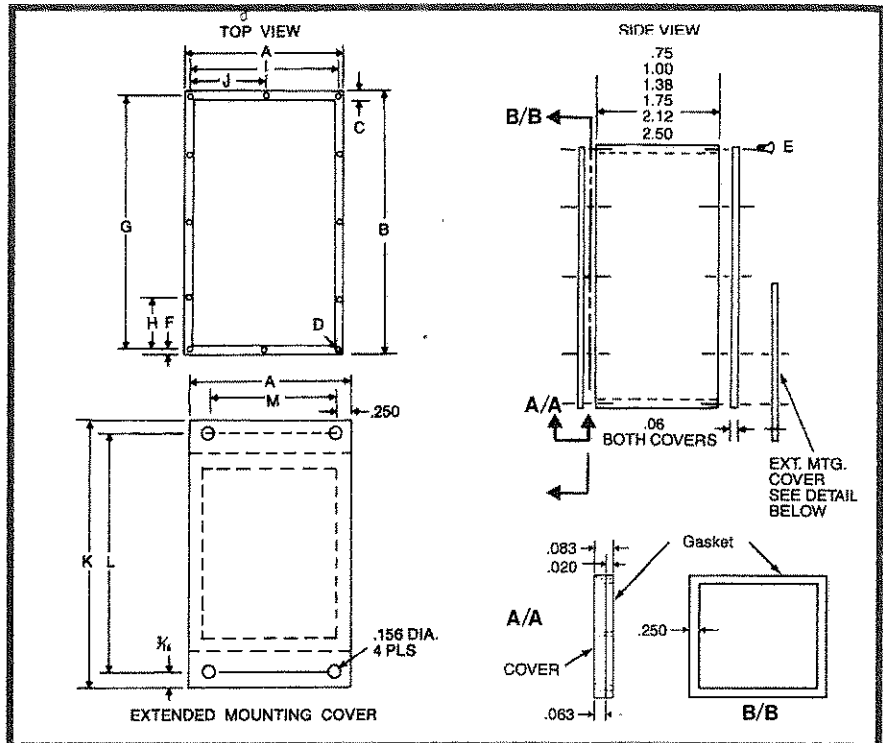


SRF SERIES

Compac's "new" SRF Series yields the greatest shielding effectiveness thru 20GHz of ANY standard product on the market today

SRF Series Enclosures

- Shielding at or above 80 dB
 - Enclosures tested to 20 GHz
 - Provides atmospheric seals, gas tight seals attainable with higher clamping forces
 - Independent access from either side
 - Greater Interior Acreage
- Construction Specs: Case-AL
6063T52 Covers-AL 5052-H32
finish chemical film per MIL C 5541
Class 3
Conformance to MIL 45208A



How To Order

S-51110-138-0 (N)

CASE PART NO. _____

CASE HEIGHT _____

075 - 0.75
100 - 1.00
138 - 1.38
175 - 1.75
212 - 2.12
250 - 2.50

COVER TYPE _____

0 - Standard flush
1 - Extended

ADD FOR NICKEL PLATE _____

CUSTOM HIGHLIGHT

As with all other of Compac's Series of enclosures, Compac will modify the SRF Series to meet your need; Whether it be drilling, tapping, milling, etc. of our standard sizes or lending of designs and method construction to your size requirements.

TO ORDER

Select a case size from the SRF series, send a drawing and include: overall height, feedthru location, type (plain Teflon or filter) connector location etc. Our expertise in shielded cases can give you a truly CUSTOM design, limited only by your requirements.

	A	B	C	D*	E	F	G	H	I	J	K	L	M
S51070	0.75	0.75	.125	4	0-80	.070	0.610	-	0.610	-	1.50	1.125	0.375
S51075	0.75	1.50	.125	4	0-80	.070	1.360	-	0.610	-	2.25	1.875	0.375
S51080	1.00	1.00	.125	4	0-80	.070	.860	-	.860	-	1.75	1.375	.50
S51085	1.00	1.50	.125	4	0-80	.070	1.360	-	.860	-	2.25	1.875	.50
S51088	1.00	2.00	.125	6	0-80	.070	1.860	0.930	0.860	-	2.75	2.375	.50
S51090	1.25	1.25	.125	4	0-80	.070	1.110	-	1.110	-	2.00	1.625	.75
S51095	1.25	2.50	.125	6	0-80	.070	2.360	1.180	1.110	-	3.25	2.875	.75
S51097	1.25	3.00	.125	6	0-80	.070	2.860	1.430	1.110	-	3.75	3.375	.75
S51100	1.50	1.50	.125	6	0-80	.070	1.360	.680	1.360	-	2.25	1.875	1.00
S51110	1.50	2.00	.125	6	0-80	.070	1.860	.930	1.360	-	2.75	2.375	1.00
S51120	1.50	2.50	.125	6	0-80	.070	2.360	1.180	1.360	-	3.25	2.875	1.00
S51125	1.50	3.25	.125	6	0-80	.070	3.110	1.555	1.360	-	4.00	3.625	1.00
S51130	1.50	6.00	.125	10	0-80	.070	5.860	1.465	1.360	-	6.75	6.375	1.00
S51140	1.75	1.75	.125	6	0-80	.070	1.610	.805	1.610	-	2.50	2.125	1.25
S51150	1.75	3.00	.125	6	0-80	.070	2.860	1.430	1.610	-	3.75	3.375	1.25
S51155	1.75	4.00	.125	10	0-80	.070	3.861	1.287	1.610	0.805	4.75	4.375	1.25
S51160	2.00	2.00	.125	8	0-80	.070	1.860	.930	1.860	.930	2.75	2.375	1.50
S51170	2.00	3.00	.125	8	0-80	.070	2.860	1.430	1.860	.930	3.75	3.375	1.50
S51180	2.00	4.00	.125	10	0-80	.070	3.860	1.286	1.860	.930	4.75	4.375	1.50
S51190	2.00	5.00	.125	12	0-80	.070	4.860	1.215	1.860	.930	5.75	5.375	1.50
S51200	2.00	6.00	.125	12	0-80	.070	5.860	1.465	1.860	.930	6.75	6.375	1.50
S51205	2.50	2.50	.125	8	0-80	.070	2.360	1.180	2.360	1.180	3.25	2.875	2.00
S51210	3.00	3.00	.125	8	0-80	.070	2.860	1.430	2.860	1.430	3.75	3.375	2.50
S54030	3.00	4.00	.125	10	0-80	.070	3.860	1.287	2.860	1.430	4.75	4.375	2.50
S51235	4.00	4.00	.125	12	0-80	.070	3.860	1.287	3.860	1.287	4.75	4.375	3.50
S51220	3.00	5.00	.125	12	0-80	.070	4.860	1.215	2.860	1.430	5.75	5.375	2.50
S51225	3.00	5.00	.188	12	2-56	.094	4.812	1.203	2.812	1.406	5.75	5.375	2.50
S51230	3.00	6.00	.188	12	2-56	.094	5.812	1.453	2.812	1.406	6.75	6.375	2.50
S51335	4.00	6.00	.125	14	0-80	.070	5.860	1.465	3.861	1.287	6.75	6.375	3.50
S51250	5.00	6.00	.188	14	2-56	.094	5.812	1.453	4.812	1.604	6.75	6.375	4.50
S57050	5.00	7.00	.188	16	2-56	.094	6.810	1.362	4.812	1.604	7.75	7.375	4.50
S58060	6.00	8.00	.188	18	2-56	.094	7.810	1.562	5.812	1.453	8.75	8.375	5.50
S59070	7.00	9.00	.188	22	2-56	.093	8.814	1.469	6.815	1.363	9.75	9.375	6.50
S58010	8.00	10.00	.188	22	2-56	.094	9.810	1.635	7.810	1.562	10.75	10.375	7.50
S59012	9.00	12.00	.188	30	2-56	.094	11.808	1.312	8.814	1.469	12.75	12.375	8.50

*D = Number of cover screws

Specifications subject to change without notice.



1320 SUITE 13, LINCOLN AVENUE
HOLBROOK, NEW YORK 11741
TOLL FREE 1-888-546-3313
TEL (631) 585-3400
FAX (631) 585-3534
www.compac-rf.com

S-51110 - 138 - 0 - (N)/MOD/XXX

CASE PART NO. _____

CASE HEIGHT _____

075 - 0.75 175 - 1.75
100 - 1.00 212 - 2.12
138 - 1.38 250 - 2.50

COVER TYPE _____

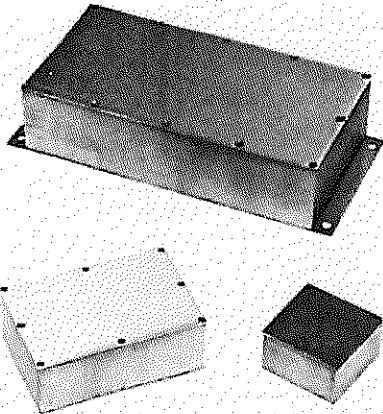
0 - Standard flush
1 - Extended

YOUR PRINT # _____

ADD FOR NICKEL PLATE _____



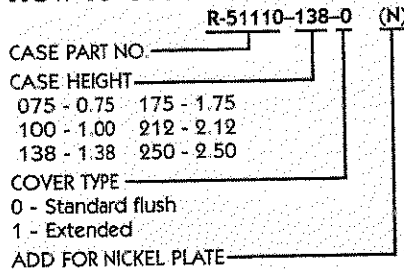
RFT SERIES



RFT Series Enclosures

- Compac's RFT Series Enclosures have shielding capabilities to 60 dB at 3 GHz
- Independent access from either side
- Greater Interior Acreage
- Construction Specs: Case-AL 6063T52 Covers-AL 5052-H32 finish chemical film per MIL C 5541, Class 3
- Conformance to MIL 45208A

How To Order



CUSTOM HIGHLIGHT

Compac will modify the RFT Series Enclosures to meet your need.

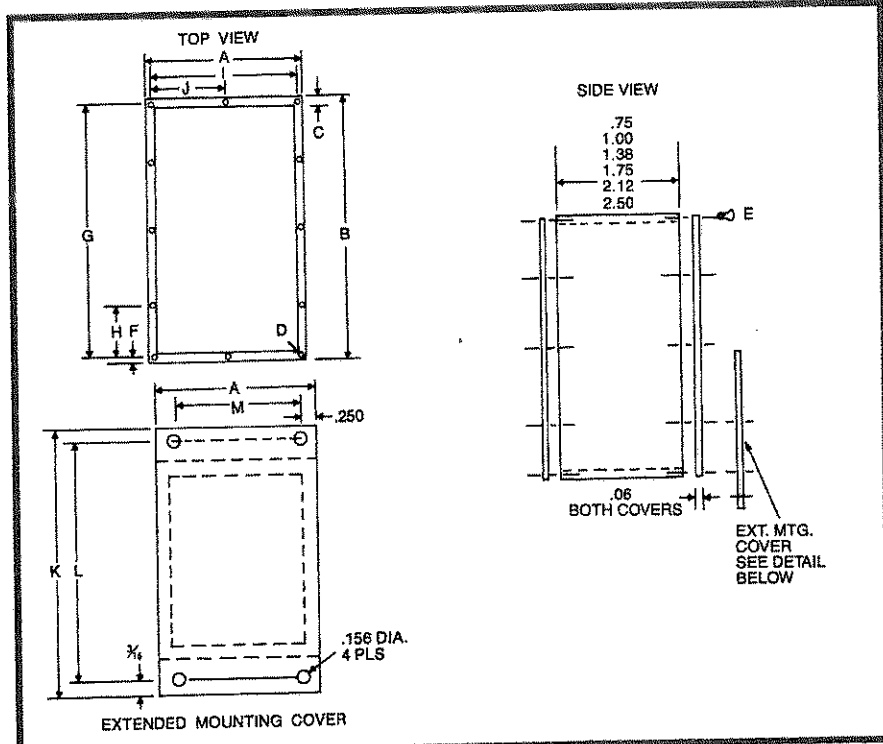
- Drilling
- Tapping
- Milling
- "D" Punching
- Cut Outs for Subminiature Connections
- Silk Screening, Painting

Work is done from your prints or to your specifications.

For your convenience Compac has included on page 7 a request for quote with a rendering of a Compac Case to depict your modifications.

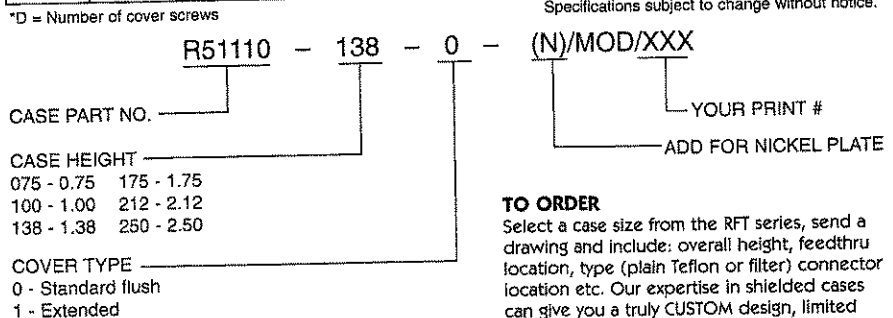


1320 SUITE 13, LINCOLN AVENUE
 HOLBROOK, NEW YORK 11741
 TOLL FREE 1-888-546-3313
 TEL (631) 585-3400
 FAX (631) 585-3534
 www.compac-rf.com



	A	B	C	D*	E	F	G	H	I	J	K	L	M
R51070	0.75	0.75	.125	4	0-80	.070	0.610	-	0.610	-	1.50	1.125	.375
R51075	0.75	1.50	.125	4	0-80	.070	1.360	-	0.610	-	2.25	1.875	.375
R51080	1.00	1.00	.125	4	0-80	.070	.860	-	0.860	-	1.75	1.375	.50
R51085	1.00	1.50	.125	4	0-80	.070	1.360	-	0.860	-	2.25	1.875	.50
R51088	1.00	2.00	.125	6	0-80	.070	1.860	0.930	0.860	-	2.75	2.375	.50
R51090	1.25	1.25	.125	4	0-80	.070	1.110	-	1.110	-	2.00	1.625	.75
R51095	1.25	2.50	.125	6	0-80	.070	2.360	1.180	1.110	-	3.25	2.875	.75
R51097	1.25	3.00	.125	6	0-80	.070	2.860	1.430	1.110	-	3.75	3.375	.75
R51100	1.50	1.50	.125	6	0-80	.070	1.360	.680	1.360	-	2.25	1.875	1.00
R51110	1.50	2.00	.125	6	0-80	.070	1.860	.930	1.360	-	2.75	2.375	1.00
R51120	1.50	2.50	.125	6	0-80	.070	2.360	1.180	1.360	-	3.25	2.875	1.00
R51125	1.50	3.25	.125	6	0-80	.070	3.110	1.555	1.360	-	4.00	3.625	1.00
R51130	1.50	6.00	.125	10	0-80	.070	5.860	1.465	1.360	-	6.75	6.375	1.00
R51140	1.75	1.75	.125	6	0-80	.070	1.610	.805	1.610	-	2.50	2.125	1.25
R51150	1.75	3.00	.125	6	0-80	.070	2.860	1.430	1.610	-	3.75	3.375	1.25
R51155	1.75	4.00	.125	10	0-80	.070	3.861	1.287	1.610	.805	4.75	4.375	1.25
R51160	2.00	2.00	.125	8	0-80	.070	1.860	.930	1.860	.930	2.75	2.375	1.50
R51170	2.00	3.00	.125	8	0-80	.070	2.860	1.430	1.860	.930	3.75	3.375	1.50
R51180	2.00	4.00	.125	10	0-80	.070	3.860	1.286	1.860	.930	4.75	4.375	1.50
R51190	2.00	5.00	.125	12	0-80	.070	4.860	1.215	1.860	.930	5.75	5.375	1.50
R51200	2.00	6.00	.125	12	0-80	.070	5.860	1.465	1.860	.930	6.75	6.375	1.50
R51205	2.50	2.50	.125	8	0-80	.070	2.360	1.180	2.360	1.180	3.25	2.875	2.00
R51210	3.00	3.00	.125	8	0-80	.070	2.860	1.430	2.860	1.430	3.75	3.375	2.50
R54030	3.00	4.00	.125	10	0-80	.070	3.860	1.287	2.860	1.430	4.75	4.375	2.50
R51235	4.00	4.00	.125	12	0-80	.070	3.860	1.287	3.860	1.287	4.75	4.375	3.50
R51220	3.00	5.00	.125	12	0-80	.070	4.860	1.215	2.860	1.430	5.75	5.375	2.50
R51225	3.00	5.00	.188	12	2-56	.094	4.812	1.203	2.812	1.406	5.75	5.375	2.50
R51230	3.00	6.00	.188	12	2-56	.094	5.812	1.453	2.812	1.406	6.75	6.375	2.50
R51335	4.00	6.00	.125	14	0-80	.070	5.860	1.465	3.861	1.287	6.75	6.375	3.50
R51250	5.00	6.00	.188	14	2-56	.094	5.812	1.453	4.812	1.604	6.75	6.375	4.50
R57050	5.00	7.00	.188	16	2-56	.094	6.810	1.362	4.812	1.604	7.75	7.375	4.50
R58060	6.00	8.00	.188	18	2-56	.094	7.810	1.562	5.812	1.453	8.75	8.375	5.50
R59070	7.00	9.00	.188	22	2-56	.093	8.814	1.469	6.815	1.363	9.75	9.375	6.50
R58010	8.00	10.00	.188	22	2-56	.094	9.810	1.635	7.810	1.562	10.75	10.375	7.50
R59012	9.00	12.00	.188	30	2-56	.094	11.808	1.312	8.814	1.469	12.75	12.375	8.50

Specifications subject to change without notice.

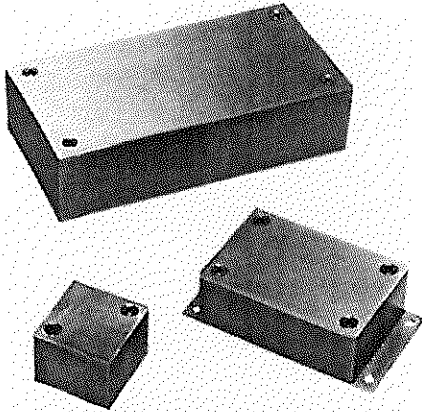


TO ORDER

Select a case size from the RFT series, send a drawing and include: overall height, feedthru location, type (plain Teflon or filter) connector location etc. Our expertise in shielded cases can give you a truly CUSTOM design, limited only by your requirements.



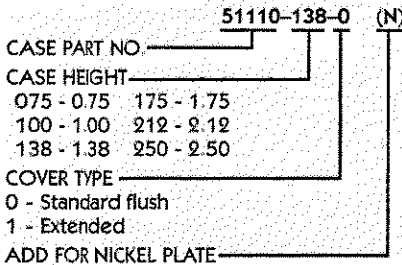
BLANK SERIES



BLANK Series Enclosures

- Compac's Blank Series Enclosures provide up to 100 dB shielding effectiveness at 100 MHz
 - Easy access and assembly
 - Off-the-shelf availability
 - Greater Interior Acreage
- Construction Specs: Case-AL 6063T52 Covers-AL 5052-H32 finish chemical film per MIL C 5541, Class 3
Conformance to MIL 45208A

How To Order



CUSTOM HIGHLIGHT

Compac will modify the Blank Series Enclosures to meet your need.

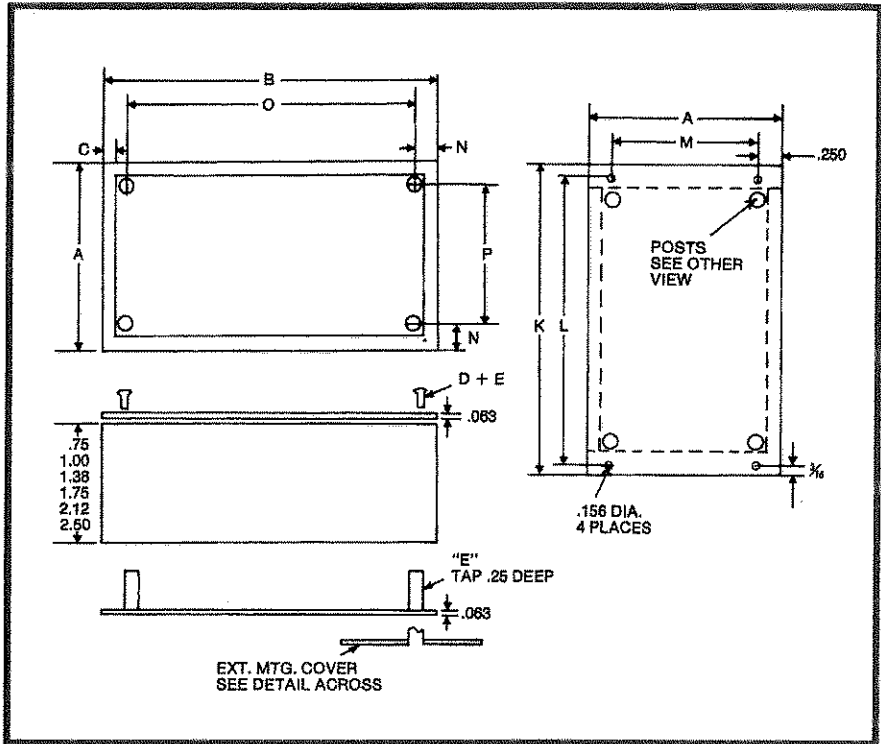
- Drilling
- Tapping
- Milling
- Punching
- Traps for Subminiature Connections
- Silk Screening, Painting

Work is done from your prints or to your specifications.

For your convenience Compac has included on page 7 a request for quote with a rendering of a Compac Case to depict your modifications.



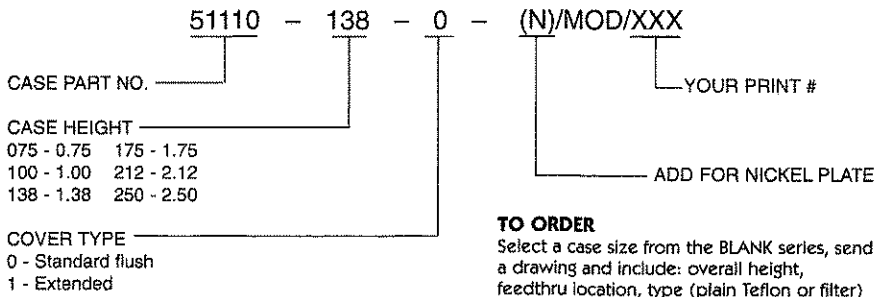
1320 SUITE 13, LINCOLN AVENUE
HOLBROOK, NEW YORK 11741
TOLL FREE 1-888-546-3313
TEL (631) 585-3400
FAX (631) 585-3534
www.compac-rf.com



	A	B	C	D	E	K	L	M	N	O	P
51080	1.00	1.00	.125	2	4-40	1.75	1.375	.50	.250	.50	.50
51085	1.00	1.50	.125	2	4-40	2.25	1.875	.50	.250	1.00	.50
51088	1.00	2.00	.125	4	4-40	2.75	2.375	.50	.250	1.50	.50
51090	1.25	1.25	.125	2	4-40	2.00	1.625	.75	.250	.75	.75
51095	1.25	2.50	.125	4	4-40	3.25	2.875	.75	.250	2.00	.75
51097	1.25	3.00	.125	4	4-40	3.75	3.375	.75	.250	.75	2.50
51100	1.50	1.50	.125	2	4-40	2.25	1.875	1.00	.250	1.00	1.00
51110	1.50	2.00	.125	4	4-40	2.75	2.375	1.00	.250	1.50	1.00
51120	1.50	2.50	.125	4	6-32	3.25	2.875	1.00	.250	2.00	1.00
51125	1.50	3.25	.125	4	6-32	4.00	3.625	1.00	.250	2.75	1.00
51130	1.50	6.00	.125	4	6-32	6.75	6.375	1.00	.250	5.50	1.00
51140	1.75	1.75	.125	4	6-32	2.50	2.125	1.25	.250	1.25	1.25
51150	1.75	3.00	.125	4	6-32	3.75	3.375	1.25	.250	2.50	1.25
51155	1.75	4.00	.125	4	6-32	4.75	4.375	1.25	.250	1.25	3.50
51160	2.00	2.00	.125	4	6-32	2.75	2.375	1.50	.250	1.50	1.50
51170	2.00	3.00	.125	4	6-32	3.75	3.375	1.50	.250	2.50	1.50
51180	2.00	4.00	.125	4	6-32	4.75	4.375	1.50	.250	3.50	1.50
51190	2.00	5.00	.125	4	6-32	5.75	5.375	1.50	.250	4.50	1.50
51200	2.00	6.00	.125	4	6-32	6.75	6.375	1.50	.250	5.50	1.50
51205	2.50	2.50	.125	4	6-32	3.25	2.875	2.00	.250	2.00	2.00
51210	3.00	3.00	.125	4	6-32	3.75	3.375	2.50	.250	2.50	2.50
54030	3.00	4.00	.125	4	6-32	4.75	4.375	2.50	.250	3.50	2.50
51235	4.00	4.00	.125	4	6-32	4.75	4.375	3.50	.250	3.50	3.50
51220	3.00	5.00	.125	4	6-32	5.75	5.375	2.50	.250	4.50	2.50
51225	3.00	5.00	.188	4	6-32	5.75	5.375	2.50	.310	4.38	2.38
51230	3.00	6.00	.188	4	6-32	6.75	6.375	2.50	.310	5.38	2.38
51335	4.00	6.00	.125	4	6-32	6.75	6.375	3.50	.250	3.50	5.50
51250	5.00	6.00	.188	4	6-32	6.75	6.375	4.50	.310	5.38	4.38
57050	5.00	7.00	.188	4	6-32	7.75	7.375	4.50	.310	6.38	4.38
58060	6.00	8.00	.188	4	6-32	8.75	8.375	5.50	.310	7.38	5.38
59070	9.00	7.00	.188	4	6-32	9.75	9.375	6.50	.310	8.38	6.38
58010	8.00	10.00	.188	4	6-32	10.75	10.375	7.50	.310	9.38	7.38
59012	9.00	12.00	.188	4	6-32	12.75	12.375	8.50	.310	11.38	8.38

*D = Number of cover screws

Specifications subject to change without notice.

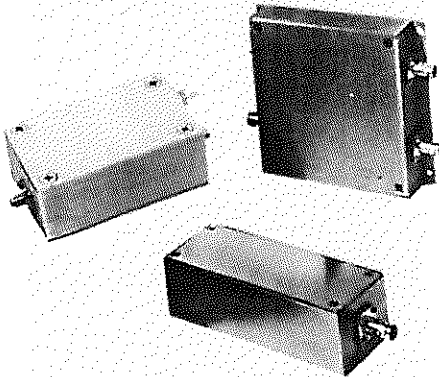


TO ORDER

Select a case size from the BLANK series, send a drawing and include: overall height, feedthru location, type (plain Teflon or filter) connector location etc. Our expertise in shielded cases can give you a truly CUSTOM design, limited only by your requirements.

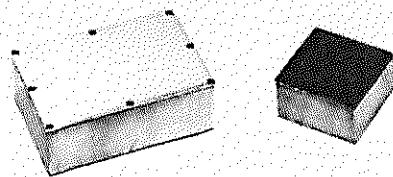


STANDARD SERIES



Compac Standard Series offers 31 off-the-shelf case configurations. In addition, you can choose either Blank, RFT, or SRF construction and flush or extended bottom covers. A choice of four-hole flange-mounted female connectors (SMA, TNC, N, BNC) designed to meet MIL C-39012 are available as well as optional filters. (For connector and filter specs, please refer to pages 9 and 13 of this catalog.)

Compac Standard Series lends itself to your engineering stock room. Cases and connectors can be interchanged to fit your requirements.



FLT Series Enclosures

- Shielding capabilities to 60 dB at 3 GHz
- Board Mountable Construction allows direct to board mounting 1 cover option provide same tapped pattern on opposite side
- Independent access to component without removing it from the board
- Greater Interior Acreage Construction Specs: Case-AL 6063T52 Covers-AL 5052-H32 finish chemical film per MIL C 554, 1Class 3 Conformance to MIL 45208A

	A
6200-51170	3.00
6201-51170	3.00
6202-51170	3.00
6200-51180	4.00
6201-51180	4.00
6202-51180	4.00
6200-51190	5.00
6201-51190	5.00
6202-51190	5.00
6200-51200	6.00
6201-51200	6.00
6202-51200	6.00

	A	B
6300-51100	1.50	.75
6300-51110	2.00	1.00

	A	B
6300-51100	1.50	.75
6201-51100	1.50	.75
6202-51100	1.50	.75
6200-51100	2.00	1.00
6201-51100	2.00	1.00
6202-51100	2.00	1.00

How To Order

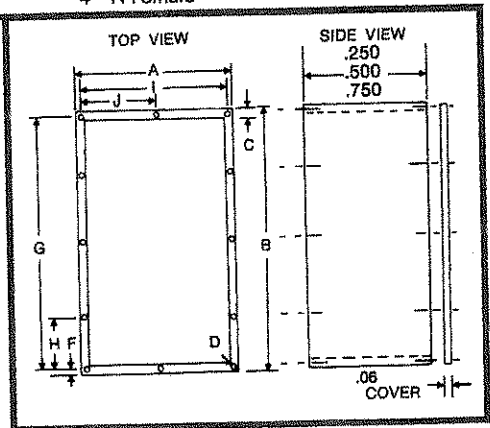
BASIC PART NUMBER

CASE TYPE RFT Blank RFI FILTER TYPE No Filter Plain Teflon Feed Thru Filter Feed Thru CONNCTOR TYPE SMA Female BNC Female TNC Female N Female COVER TYPE Standard flush Extended

FLT SERIES

How To Order

FL - 4110 - XXX - FINISH I - Irridite N - Nickel S - Specify CASE HEIGHT 025 - .250 050 - .500 075 - .750



	A	B	C	D	E	F	G	H	I
FL4110	.75	.75	125	4	0-80	070	.610	—	.610
FL4120	.75	1.50	125	4	0-80	070	1.360	—	.610
FL4130	1.00	1.00	125	4	0-80	070	.860	—	.860
FL4140	1.00	1.50	125	4	0-80	070	1.360	—	.860
FL4150	1.00	2.00	125	6	0-80	070	1.860	.930	.860
FL4160	1.25	1.25	125	4	0-80	070	1.110	—	1.110
FL4170	1.25	2.50	125	6	0-80	070	2.360	1.180	1.110
FL4180	1.50	1.50	125	6	0-80	070	1.360	.680	1.360
FL4190	1.50	2.00	125	6	0-80	070	1.860	.930	1.360



REQUEST FOR QUOTATION

Instructions for specifying a Compac Customer Enclosure.

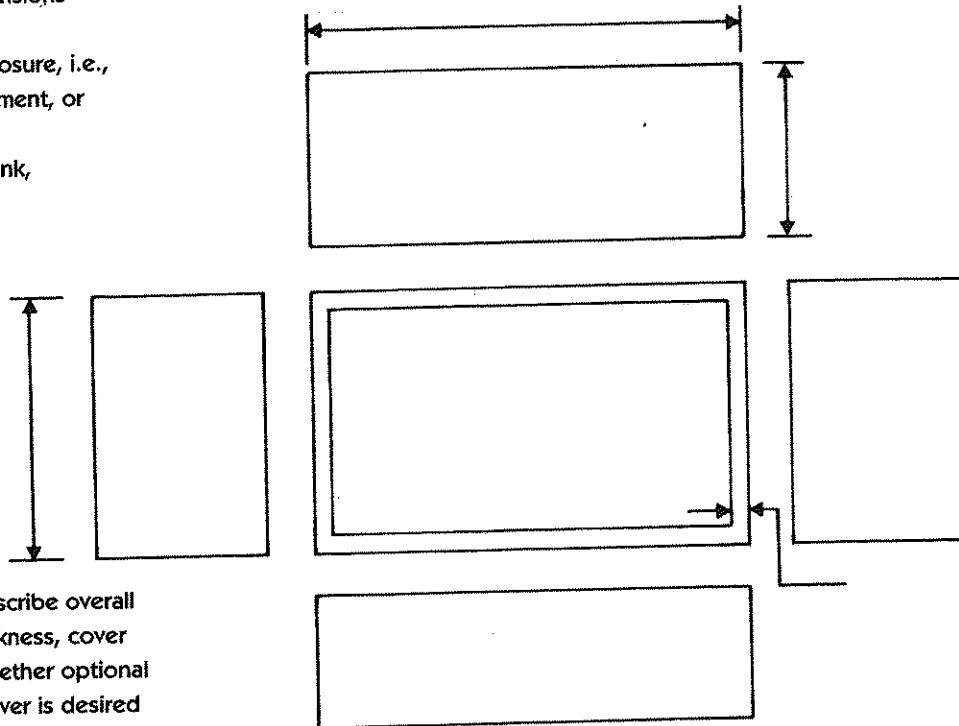
Specify where applicable —

- Length & Width Dimensions
- Wall Thickness
- Modifications to Enclosure, i.e., Connector and Placement, or Filter Placement
- Hole Type (Countersink, Tap, Thru)
- Hole Dimension
- Method of Construction (SRF, RFT or Blank)

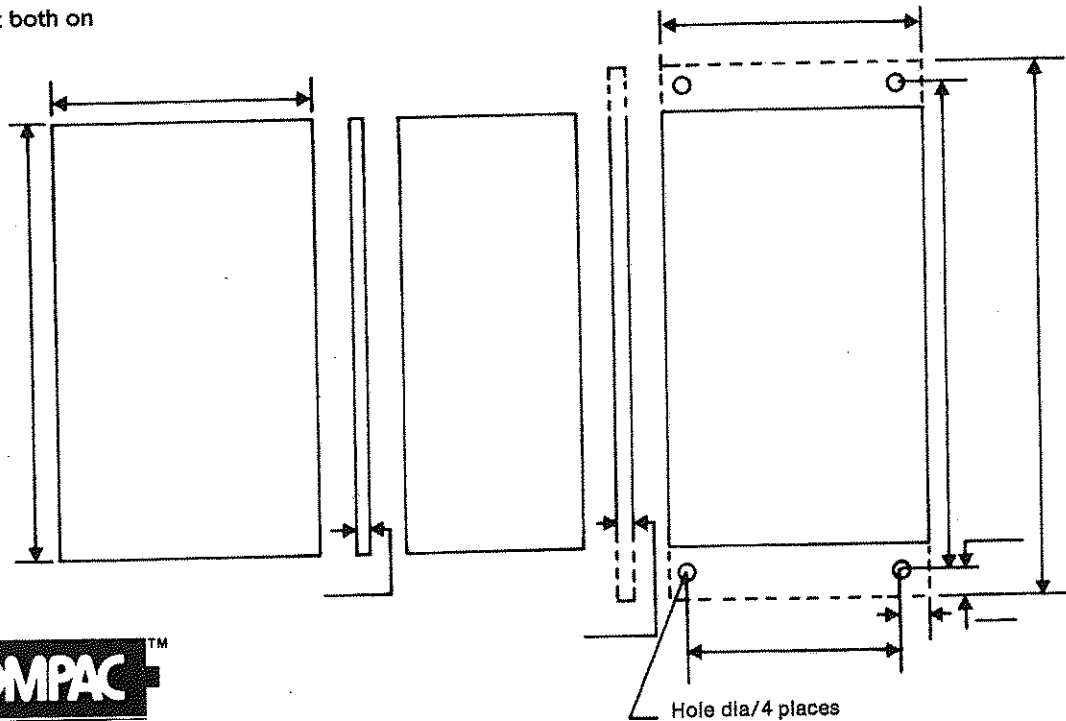
Type of Construction _____

SRT _____ BLANK _____

RFT _____ CUSTOM _____



Use this drawing to describe overall length, width, wall thickness, cover thickness. Describe whether optional extended mounting cover is desired etc. Further use the various views to depict hole placement both on covers and sidewalls of the enclosure.



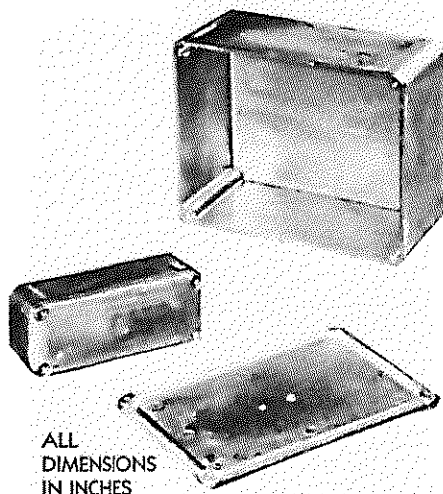
1320 SUITE 13, LINCOLN AVENUE
 HOLBROOK, NEW YORK 11741
 TOLL FREE 1-888-546-3313
 TEL (631) 585-3400
 FAX (631) 585-3534
 www.compac-rf.com

CO. NAME _____

PRINT NUMBER _____



DIECAST BOXES



ALL DIMENSIONS IN INCHES

These new cast boxes are also available with RF connectors and filters. Contact factory for details.

- Aluminum alloy box, with no sharp corners
- Countersunk self-tapping screws in lid
- Interlocking flanged lid
- Unfinished but smooth surface accepts normal paints

COMPAC CAT NO.	DIMENSIONS – Inches (mm)		
	A	B	C
DC-4001	3.6 (92)	1.5 (38)	1.0 (27)
DC-4002	4.3 (111)	2.3 (60)	1.0 (27)
DC-4003	4.6 (119)	3.6 (93)	1.1 (30)
DC-4004	4.6 (119)	3.6 (93)	2.0 (52)
DC-4005	7.3 (187)	4.7 (119)	2.0 (52)
DC-4006	7.3 (187)	4.7 (119)	3.0 (77)
DC-4007	7.3 (187)	7.3 (187)	2.5 (63)

FINISHES

Standard finish for a COMPAC Enclosure. Chemical finish per MIL-C-5541 Class 3.

Other finishes, which comply to federal and military standards available upon request:

- Nickel — to MIL Spec N-290
- Painting
- Black Anodizing
- Silk Screening

For additional finishes or information please contact the factory direct.

RF CONNECTORS

COMPAC offers a selection of four hole flange mounted connectors, all designed to meet MIL-C-39012.

COMPAC will also mount any connector specified i.e. Sub-miniature "D", SMB, SMC etc. per client's requirement.

For mounting and excellent grounding please refer to page 13 "Accessories" for detailed descriptions of our MB Series: Mounting Bars, with sizes to fit all COMPAC Standard Size.

COMPAC NO.	TYPE
100-10200	SMA
100-10210	BNC
100-10220	TNC
100-10230	N



1320 SUITE 13, LINCOLN AVENUE
HOLBROOK, NEW YORK 11741
TOLL FREE 1-888-546-3313
TEL (631) 585-3400
FAX (631) 585-3534
www.compac-rf.com



CUSTOM CAPABILITES

CUSTOM Series

SERVICES

MILLING — Enclosures,
Channel, Grooves

HOLES —
Drilled or Punched

MATERIAL THICKNESS —
To Your Specifications

SILK SCREENING OR PAINTING

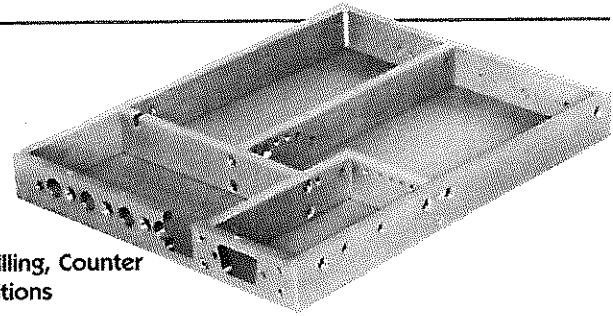
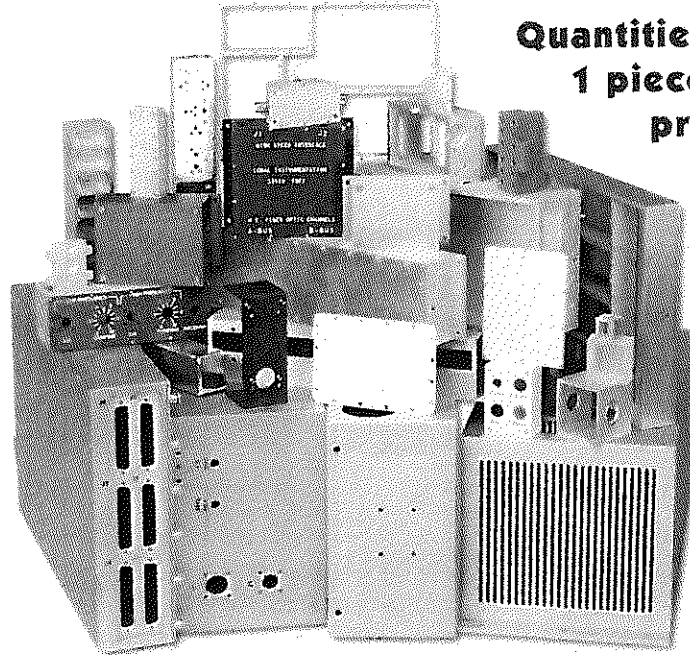
CONSTRUCTION METHODS —
Extrusion

**BRAZED, FABRICATED,
MILLED SHEETMETAL** —
To Your Specifications

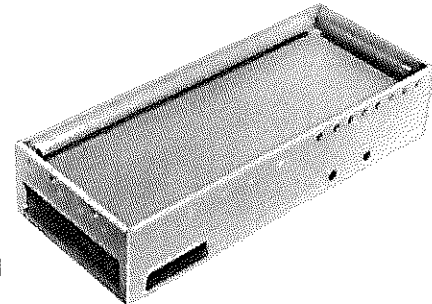
ADVANTAGE OF A CUSTOM ENCLOSURE

- Low Cost
- To your Exacting Specification
- Short Lead Times
- Prototype to Production Quantity
- Finished Product Ready for Assembly
- With or Without Connectors & Filters

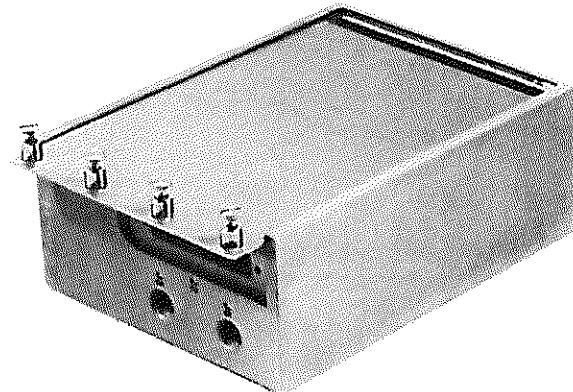
Quantities from
1 piece thru
production



Custom
Manufactured
using RFT Construction
6.00" x 8.00" x .75",
Shows Custom Drilling, Milling, Counter
Sinking, and Custom Partitions



Brazed Enclosure with Mounting Bars
for Board Mounting Custom
Manufactured RFT Construction
5.25" x 12.0" x 2.5"
Partition Brazed Dividing Enclosure
into 2—1.25 Compartments with Bars
in One Side for Board Mounting Milled
Cutouts in Bottom Compartments



Custom
Manufactured
Utilizing Sliding
Cover w/Captivated
Screw for Convenient
Access to Components



1320 SUITE 13, LINCOLN AVENUE
HOLBROOK, NEW YORK 11741
TOLL FREE 1-888-546-3313
TEL (631) 585-3400
FAX (631) 585-3534
www.compac-rf.com

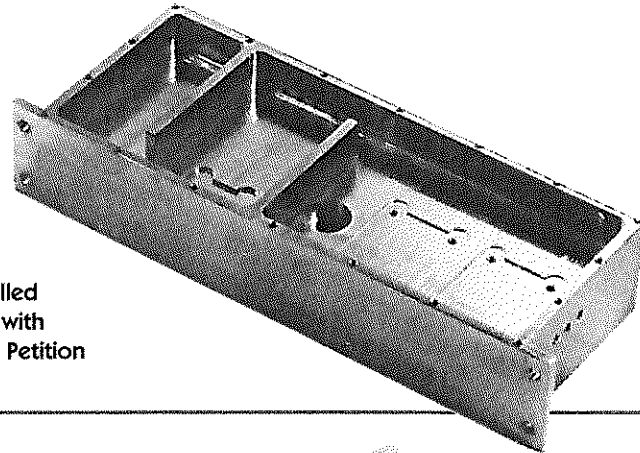


CUSTOM CAPABILITES

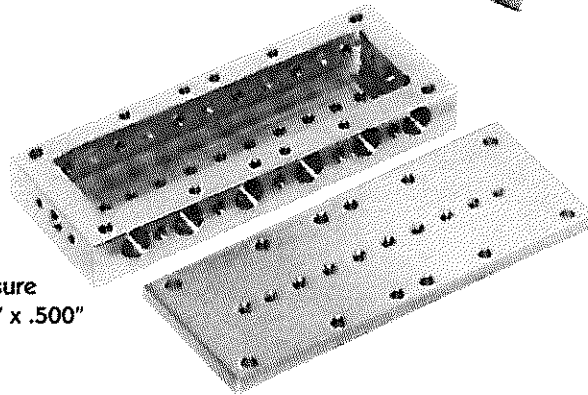
CUSTOM Series

COMPAC's unique product line can easily be tailored to meet your many custom specifications. But if our RFT, Blank or SRF Series do not fit your requirements, COMPAC can build a totally custom enclosure quickly and inexpensively. Compac's versatility converts your design into a finished product ready for assembly and installation. All you have to do is supply circuitry!

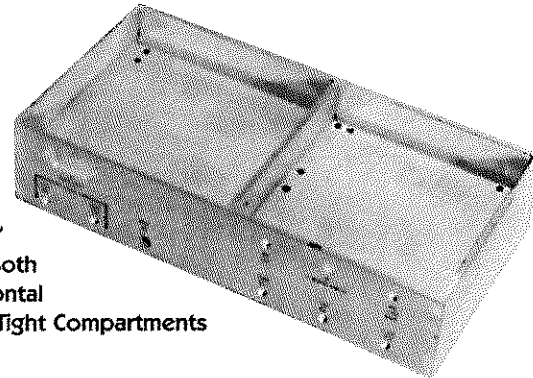
**Print or
Detailed Drawings
Required**



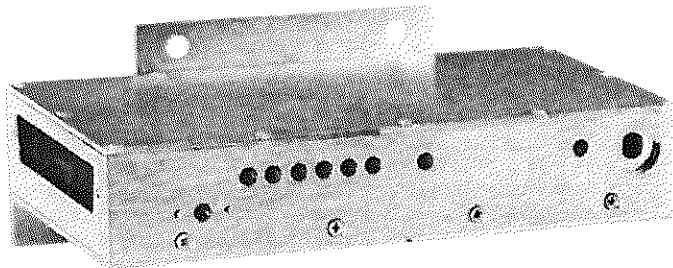
Custom Milled
Enclosure with
Horizontal Partition



Custom
Milled Enclosure
1.25" x 3.25" x .500"



Custom Enclosure
RFT Construction
4.5" x 8.0" x 2.75"
Brazed Partitions Both
Vertical and Horizontal
Dividing into 3 RF Tight Compartments



Manufactured from R51230-100-0(N)
Showing Custom Mounting Plate Drilling,
Milling and "D" Punching



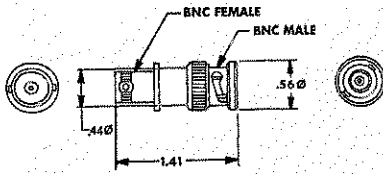
1320 SUITE 13, LINCOLN AVENUE
HOLBROOK, NEW YORK 11741
TOLL FREE 1-888-546-3313
TEL (631) 585-3400
FAX (631) 585-3534
www.compac-rf.com



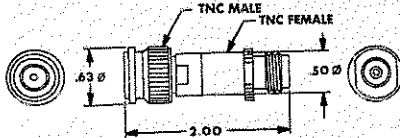
ACCESSORIES

COAXIAL ATTENUATORS

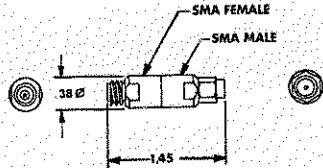
BNC / DC TO 2.0 GHz



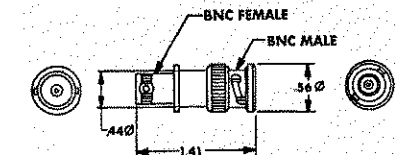
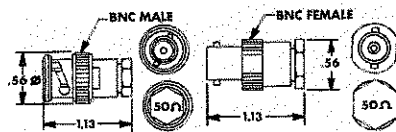
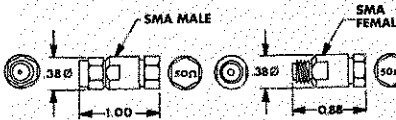
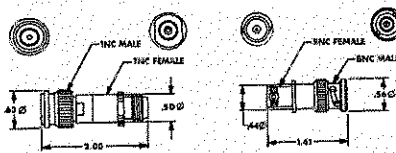
TNC / DC TO 2.0 GHz



SMA / DC TO 2.5 GHz



IMPEDANCE MATCHING PADS



BNC/DC TO 2.0 GHz

Operating Temperature Range:
-55 to +125°C

Total Input Power: 1 watt average
Impedance: 50 ohms

VSWR: DC to 1 GHz 1.2 to 1

1 GHz to 2 GHz 1.4 to 1

Accuracy: DC to 1 GHz ± .5 dB

1 GHz to 2 GHz ± .8 dB

TNC/DC TO 2.0 GHz

Operating Temperature Range:
-55 to +125°C

Total Input Power: 1 watt average
Impedance: 50 ohms

VSWR: DC to 1 GHz 1.2 to 1

1 GHz to 2 GHz 1.4 to 1

SMA/DC TO 2.5 GHz

Operating Temperature Range:
-20 to +125°C

Total Input Power: 1 watt average
Finish: Passivated Stainless

Accuracy: DC to 1 GHz ± .5 dB

1 GHz to 2.5 GHz ± 1 dB

Impedance: 50 ohms

VSWR: DC to 1 GHz 1.2 to 1 Max.

1 GHz to 2.5 GHz 1.4 to 1 Max.

PART NO.	ATTENUATION VALUE
130-1001	1 dB
130-1002	2 dB
130-1003	3 dB
130-1006	6 dB
130-1010	10 dB
130-1020	20 dB
130-1030	30 dB

PART NO.	ATTENUATION VALUE
130-2001	1 dB
130-2002	2 dB
130-2003	3 dB
130-2006	6 dB
130-2010	10 dB
130-2020	20 dB
130-2030	30 dB

PART NO.	ATTENUATION VALUE
130-3001	1 dB
130-3002	2 dB
130-3003	3 dB
130-3006	6 dB
130-3010	10 dB
130-3020	20 dB
130-3030	30 dB

SPECIFICATION	MODEL 130-1050	MODEL 130-2050	MODEL 130-1075	MODEL 130-2075
Frequency Range	DC to 1 GHz	DC to 1 GHz	DC to 1 GHz	DC to 1 GHz
Impedance	50 ohm male 75 ohm female	75 ohm male 50 ohm female	50 ohm male 75 ohm female	75 ohm male 50 ohm female
Attenuation (Loss)	5.7 dB	5.7 dB	5.7 dB	5.7 dB
VSWR (Max)	1.2 to 1	1.2 to 1	1.2 to 1	1.2 to 1
Connections	BNC	BNC	TNC	TNC
Accuracy	± .5 dB	± .5 dB	± .5 dB	± .5 dB

COAXIAL TERMINATIONS

SMA/DC TO 2.5 GHz

Specifications: 120-1001 / 120-1002

Power: 1 watt average

Material: Passivated Stainless Steel

Impedance: 50 ohm nominal

Temperature Range: -20° to +125°C

VSWR: DC to 2.5 GHz 1.2 to 1 maximum

BNC

Specifications

Power: 1 watt average

VSWR: 1.1 to 1 maximum

DC TO 2 GHz — 50 ohms

Male: 120-1003 / 120-1005

Female: 120-1004

DC TO 1 GHz — 75 ohms

Female: 120-1006

FEED-THRU TERMINATIONS

	MODEL 120-1007	MODEL 120-1008
POWER	1 Watt Average	1 Watt Average
OHMS	50	75
FREQUENCY	DC to 1000 MHz	DC to 500 MHz
VSWR	DC to 500 MHz 1.1 to 1/500 to 1/500 to 1000 MHz 1.2 to 1	1.2 to 1

All dimensions in inches.

Additional products which do not appear on this page can be designed to meet your requirements.

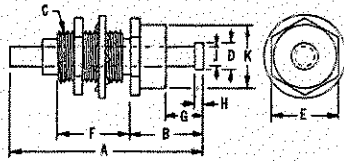
1320 SUITE 13, LINCOLN AVENUE
HOLBROOK, NEW YORK 11741
TOLL FREE 1-888-546-3313
TEL (631) 585-3400
FAX (631) 585-3534
www.compac-rf.com



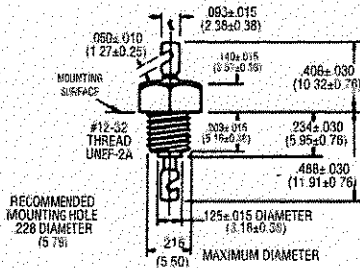
ACCESSORIES

FILTERS & FEED-THRU

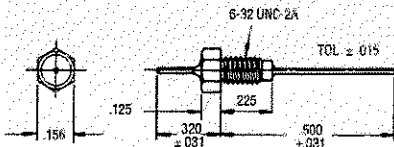
Plain Teflon Feed-Thru



PART NO.	DIMENSIONS									
	A	B	C	D	E	F	G	H	J	K
100-1001	0.690	0.287	12-28 UNF-2A	0.082	0.250	0.225	0.163	0.031	0.062	0.188

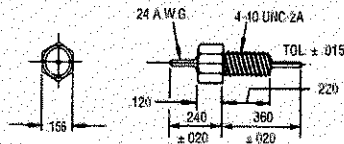


PART NO.	DIMENSIONS									
	A	B	C	D	E	F	G	H	J	K
100-1002	0.874	0.406	12-32 UNF-2A	0.093	0.312	0.234	—	0.031	—	—

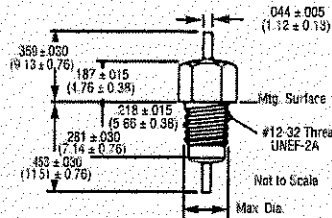


RFI/EMI SUPPRESSION FILTERS

PART NO.	RATED I _{DC}	WORKING VOLTS		DCR MAX.	REFER CAP- - -	INSERTION LOSS					
		+85°C	±125°C			1 MHz	10 MHz	100 MHz	200 MHz	1 GHz	10 GHz
		100-1003	3 Amps			200 VDC	100 VDC	.01	.001 MFD	—	3
100-1004	10 Amps	200 VDC	100 VDC	.01	.022 MFD	10	28	50	60	60	60

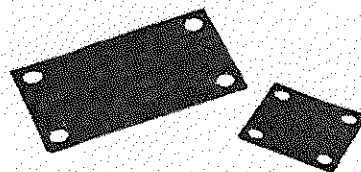


PART NO.	RATED I _{DC}	WORKING VOLTS		DCR MAX.	REFER CAP- - -	INSERTION LOSS					
		+85°C	±125°C			1 MHz	10 MHz	100 MHz	200 MHz	1 GHz	10 GHz
		100-1005	10 Amps			200 VDC	100 VDC	.01	.0015 MFD	—	5
100-1006	10 Amps	200 VDC	100 VDC	.01	.022 MFD	20	30	50	55	65	65



HIGH FREQUENCY LOWPASS FEED-THRU FILTERS

PART NO.	RATED I _{DC}	WORKING VOLTS		DCR MAX.	REFER CAP- - -	INSERTION LOSS					
		+85°C	±125°C			1 MHz	10 MHz	100 MHz	200 MHz	1 GHz	10 GHz
		100-1006	10 Amps			200 VDC	100 VDC	—	5500 pf	—	10



GASKETS

MATERIAL SPECIFICATIONS

Thickness: .020N ± .004

Wire: .015 Dia.

Screen: 24 Mesh

Wire Specification: AMS 4182

Sealing Material: Neoprene

Rubber Specification: AMS 3222

Temperature Range: -40° to +212°F

COMPAC's gaskets solve the problem of shielding against EMI/RFI while providing a fluid tight seal. Made of woven aluminum wire screen impregnated with Neoprene sealing material, the gasket achieves RFI shielding by contact of the aluminum screen gasket to both of the mating surfaces of the assembly. The fluid sealing material fills the gasket to both of the mating surfaces to the assembly. The fluid sealing material fills the gaps between the individual wires of the screen, making the joint pressure tight. Also available for RFT and SRF Series. Contact factory.

GASKET PART NO.	FITS CASE PART NO.	GASKET PART NO.	FITS CASE PART NO.
80-51080	51080	80-51160	51160
80-51090	51090	80-51170	51170
80-51095	51095	80-51180	51180
80-51100	51100	80-51190	51190
80-51110	51110	80-51200	51200
80-51120	51120	80-51205	51205
80-51125	51125	80-51210	51210
80-51130	51130	80-51220	51220
80-51140	51140	80-51230	51230
80-51150	51150	80-51250	51250

1320 SUITE 13, LINCOLN AVENUE
HOLBROOK, NEW YORK 11741
TOLL FREE 1-888-546-3313
TEL (631) 585-3400
FAX (631) 585-3534
www.compac-rf.com



MB SERIES MOUNTING BARS

CUSTOM CAPABILITIES

COMPAC Mounting bars provide continuous edge support and grounding of circuit boards for critical applications.

Any COMPAC Enclosure 1.0" x 1.0" or larger can be equipped with mounting bars on two or four walls at the factory or in the field.

How To Order

For Factory Installation specify:
COMPAC Part # _____ with
Mounting Bars installed.

For Field Installation:

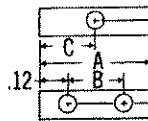
Select Mounting Bar 1" shorter than outside length of box.

EXAMPLE: For 51220 box, use
(2) MB200 and (2) MB400 bars.

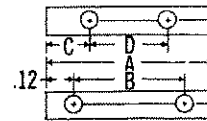
PART NO.	A	B	C	D
MB50	.50	.25	.25	—
MB75	.75	.50	.37	—
MB100	1.00	.75	.50	—
MB150	1.50	1.25	.37	.75
MB200	2.00	1.75	.50	1.00

All holes 2-56 UNC-2B thru
All mounting Bars .25 x .25

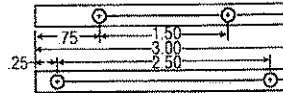
MB50-MB100



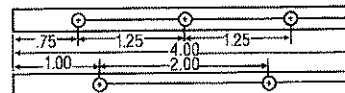
MB150-MB200



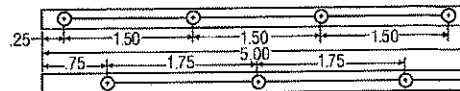
MB300



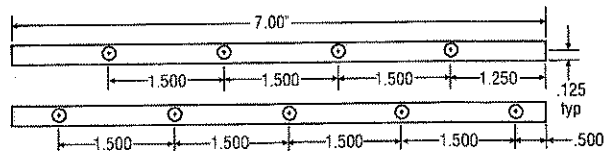
MB400



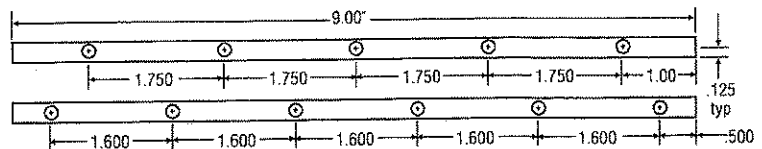
MB500



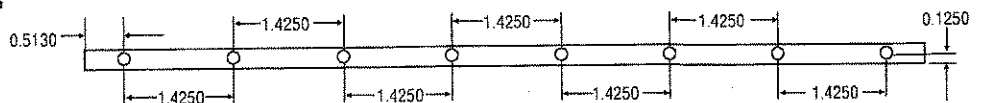
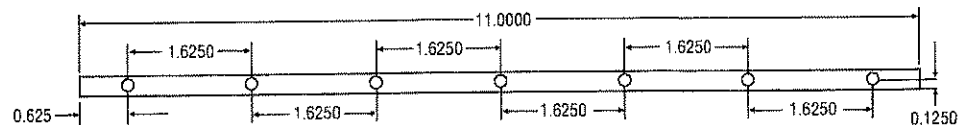
MB700



MB900



MB1100



1320 SUITE 13, LINCOLN AVENUE
HOLBROOK, NEW YORK 11741
TOLL FREE 1-888-546-3313
TEL (631) 585-3400
FAX (631) 585-3534
www.compac-rf.com



LIMITED WARRANTY

COMPAC products are manufactured to the highest standards of quality and workmanship. Throughout the entire manufacturing process inspections and tests are made to insure superior performance and reliability.

All products manufactured by COMPAC are covered by the following limited warranty:

COMPAC warrants all products manufactured by COMPAC either standard or manufactured to customers' specifications to be free of any defects in material or workmanship, and to meet all specifications published in the catalog or as defined by customers' prints. The company's liability under this warranty is limited to repair and/or replacement of defective parts returned, freight prepaid, within one year from date of shipment.

Misuse in operation or authorized repair of this product voids this warranty.



1320 SUITE 13, LINCOLN AVENUE
HOLBROOK, NEW YORK 11741
TOLL FREE 1-888-546-3313
TEL (631) 585-3400
FAX (631) 585-3534
www.compac-rf.com

500 Standard Sizes

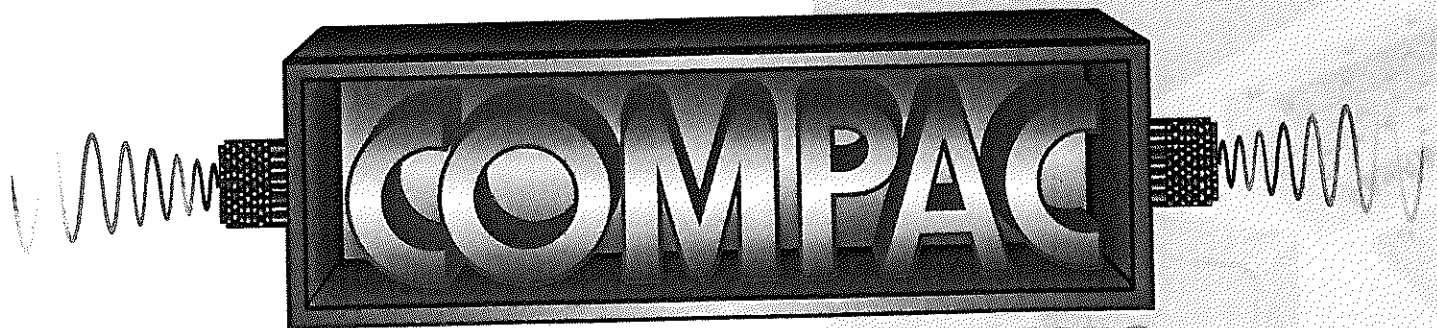
Custom Capabilities

**Attenuation to
80dB@20GHz**

**Customized
Standard Product**

**Custom Manufacturing
To Your Specification**

Prototype to Production



RF SHIELDING SPECIALISTS

1320 SUITE 13, LINCOLN AVENUE
HOLBROOK, NEW YORK 11741
1-888-546-3313
631.585.3400
FAX 631.585.3534
www.compac-rf.com